

Long's Chapel United Methodist Church Organizational Plan
Mission: "To Reach People for Becoming Fully Devoted Followers of Jesus Christ"

Long's Chapel UMC Charge Conference -- Al Ward (District Superintendent, Waynesville Dst.)

Sr. Minister -- Chuck Wilson

-- Administrative Assistant to the Pastors -- Mary Evans

Assoc. Minister -- Alan Mears (Ministry Focus = Evangelism, Congregational Care, Missions)

Church Council -- Preston Jones

- Lay Leader -- Peggy Winters
- Annual Conference Delegates -- Eliza Mathewes, Jim Wagoner
- Alternate Delegates -- Helen Shell, John Schrot
- Membership Secretary -- Mary Evans
- Recording Secretary -- Laurie Sheppard
- Church Historian -- Julia Hoyle

General Stewards:	
Sonny Lescalleet	Tim Phelan
Paulette Camp	Salem Wyatt
Brian Birthright	Chad Warner
Rufus Brown	Phillip Abston

Church Administrator -- Gary Arrington

- Financial Manager -- Judy Wiggins
- Property Manager -- Dick Strawser
 - Custodian -- Rob Evans
 - Contract Mowing --
- Audit -- via Burtleson Earley & Keel, CPA's (Gwen Merrill)

Office -- Lynn Carpenter

- Office Assistant(s) -- Stacy Hammett
- Volunteers

Administrative Teams

Staff-Parish -- Anthony Turner

- Personnel
- Staff Support
- Annual Conference Delegate
- District Relations

Trustees -- Dean McMahon

- Long Fund (education & missions endowment) -- Don Shell
- Maintenance
- Capital Projects
- Insurance
- Endowments
- Vehicles

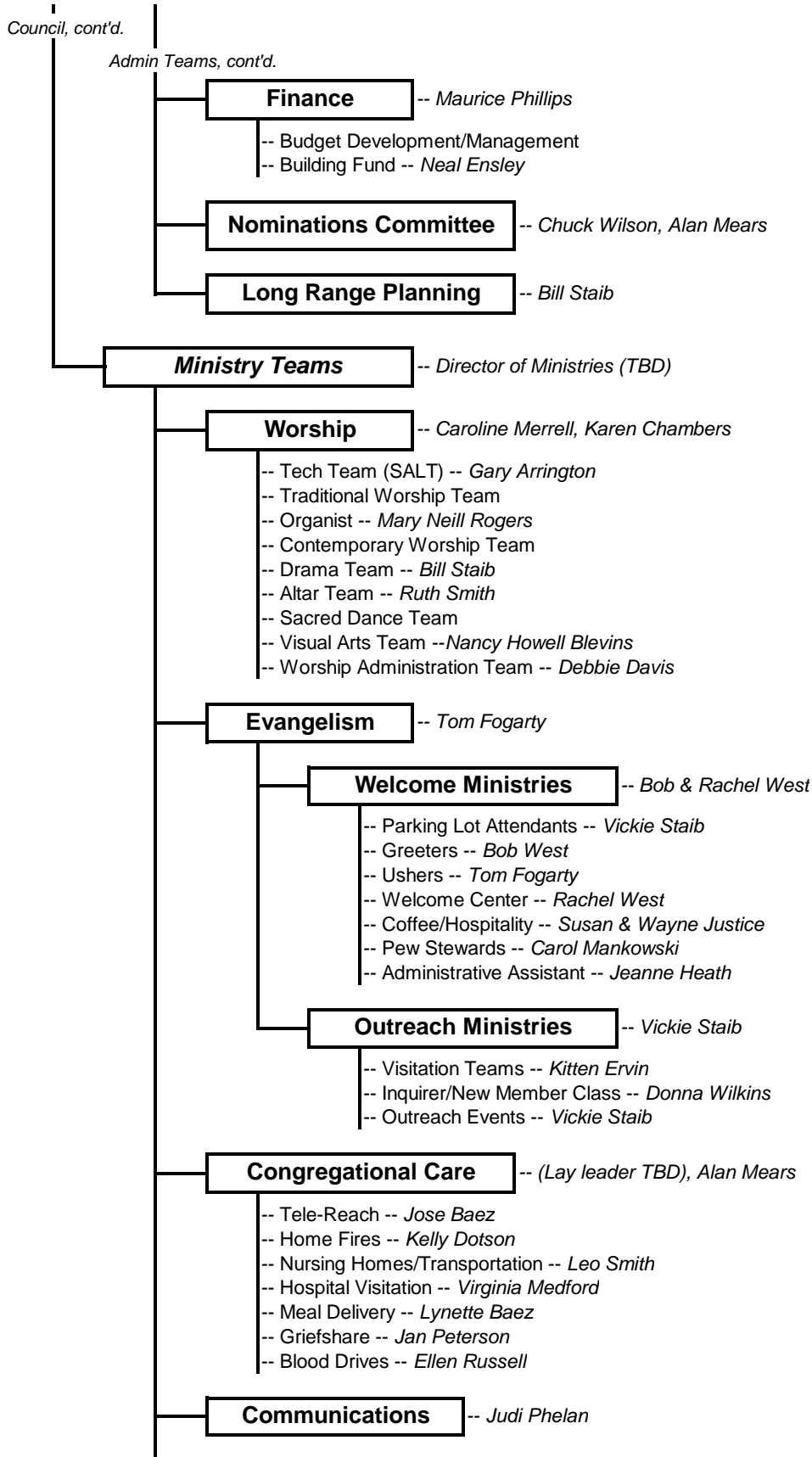
Property Volunteers --

- Gardening Team -- Jeanne Colburn
- Outdoor Workdays
- Indoor Workdays
- Handyman -- Lantz Reppert

Parsonage Committee -- Donna Mershon

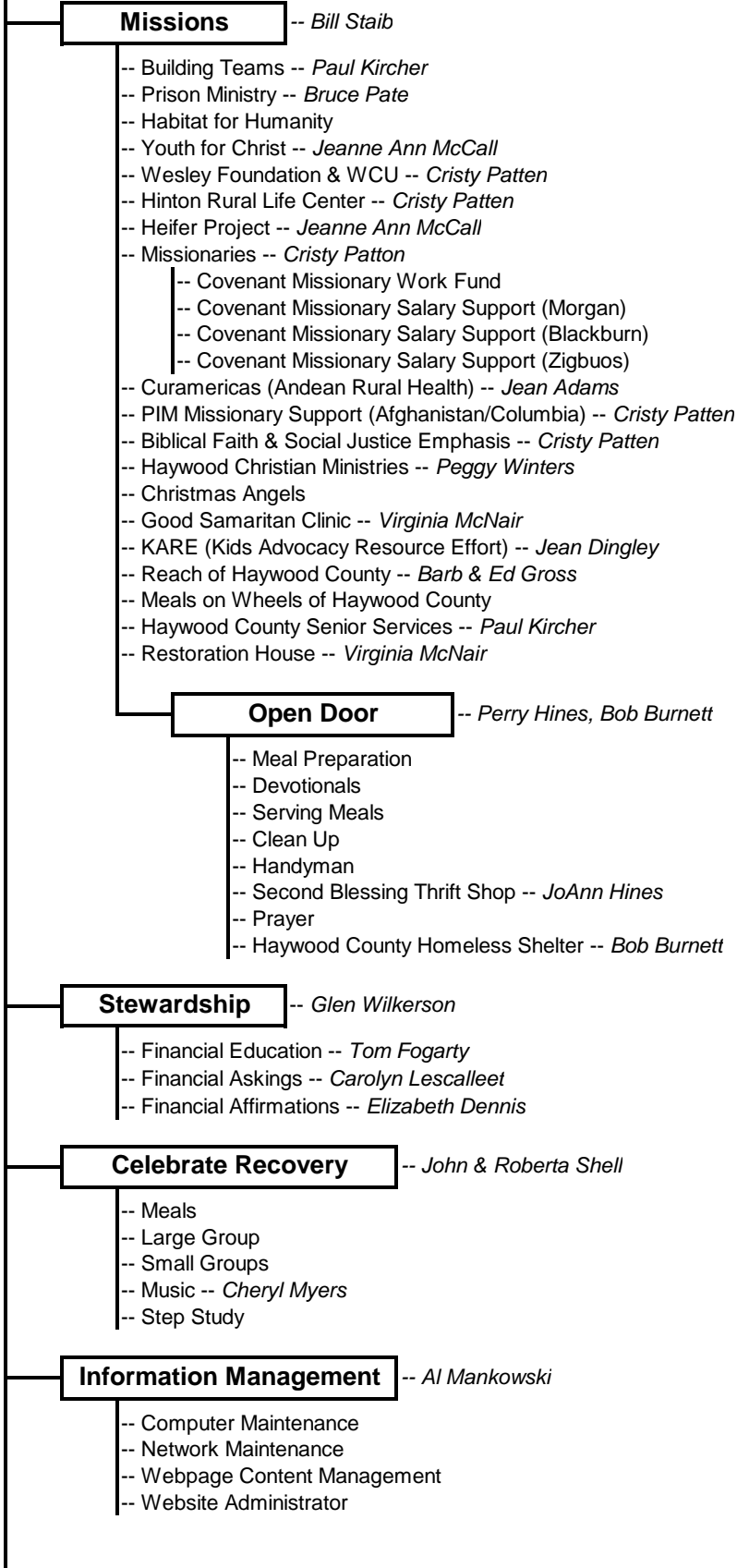
Kitchen Mtc. -- Brenda Hipps, Julia Hoyle

Long's Chapel United Methodist Church Organizational Plan
Mission: "To Reach People for Becoming Fully Devoted Followers of Jesus Christ"



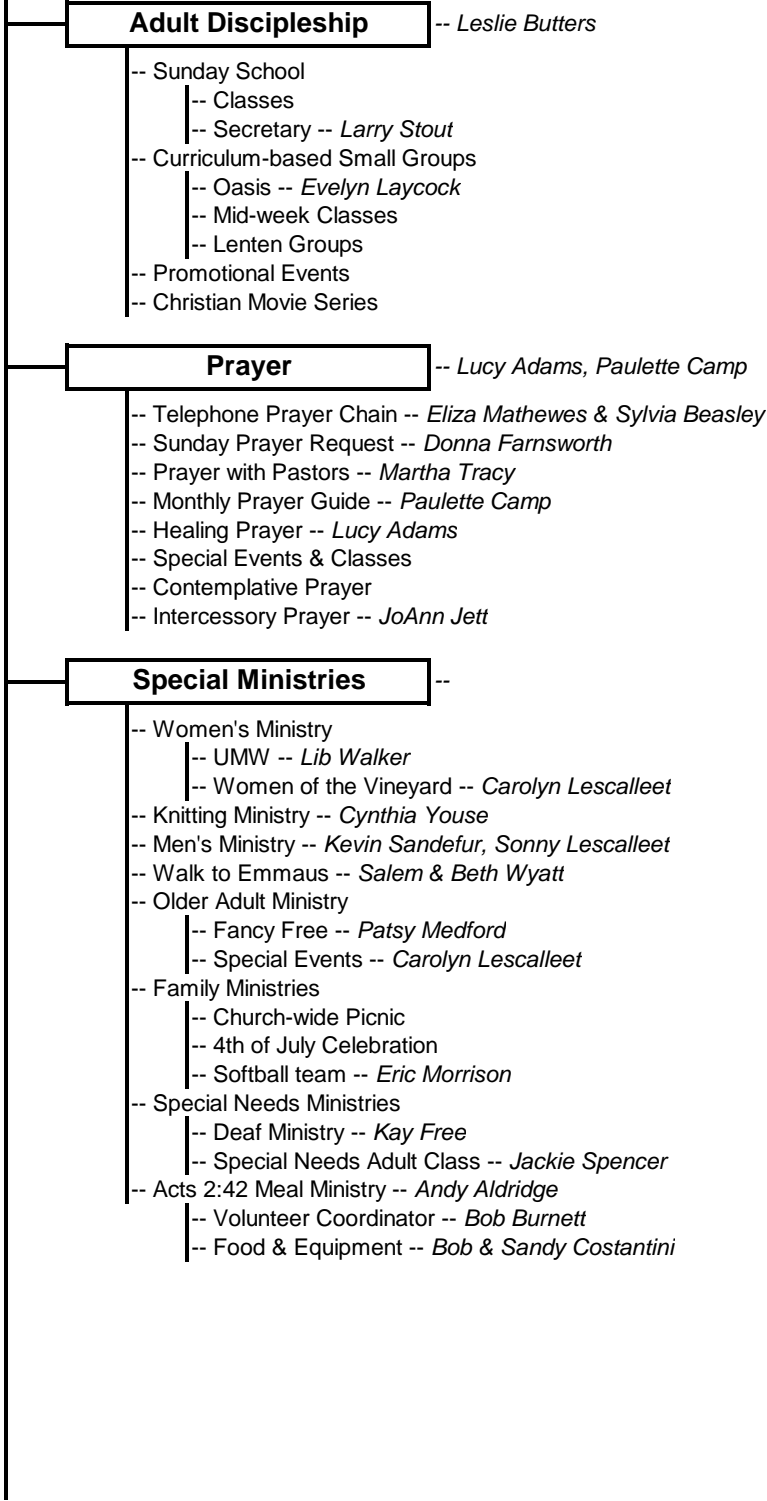
Long's Chapel United Methodist Church Organizational Plan
Mission: "To Reach People for Becoming Fully Devoted Followers of Jesus Christ"

Ministry Teams, cont'd.



Long's Chapel United Methodist Church Organizational Plan
Mission: "To Reach People for Becoming Fully Devoted Followers of Jesus Christ"

Ministry Teams, cont'd.



Long's Chapel United Methodist Church Organizational Plan
Mission: "To Reach People for Becoming Fully Devoted Followers of Jesus Christ"

Ministry Teams, cont'd.

